

# PT. BINESQO Mulyatama Sejahtera *Company Profile*



## Office and Workshop :

Jl.Eropa.1, Kav.I-2/4, Krakatau Industrial Estate

Cilegon 42443, Banten - Indonesia

Phone : +62 254 393315 ( Hunting ), Fax : +62 254 385708,

Email : [infobms@binesqo.com](mailto:infobms@binesqo.com)

Web : [www.binesqo.com](http://www.binesqo.com)



## **Table Of Content**

- 1. Introduction**
- 2. Company Outline**
- 3. Quality Policy**
- 4. Scope Of Services**
- 5. Workshop Layout**
- 6. Workshop Facility**
- 7. Equipments Facility**
- 8. Work Experience Photographs**
- 9. Work Experience List**



## Introduction

Our company was originally named **PT. CAHAYA Anugrah Tama**.

Since June 2012, Our company name has changed to

**PT. BINESQO Mulyatama Sejahtera**

We are a national company specialized in steel fabricator and erector of process equipment, Piping Process, Pipe Line, Steel Structural and similar steel fabrication work, used primarily in Petrochemical Plants, Oil & Gas Industries and Power Plants as for the following

|                  |   |  |
|------------------|---|--|
| Pressure Vessel  | : | Drum, Column, Filter, Silo, Stack, Heater,<br>Heat Exchanger, Condensor and Others   |
| Tankage          | : | Welded Steel Tank.   |
| Piping           | : | Piping System, Manifold and Metering.  |
| Pipe Line        | : | Above and Under ground Pipe line of<br>Natural Gas, Oil, Chemical, Liquid nitrogen<br>and Liquid oxygen  |
| Steel Structural | : | Building, Platform, and other Steel tubular<br>and Structural shape fabrication  |
| Other Services   | : | Rolling Plate up to 60 mm Thk, Elipsoidal Head<br>Bending, Manpower Supply, Sandblasting and<br>Painting, Hot and Cool Insulation, Civil work. |

By all Indonesian Project Management, Staff, Engineer, Supervision and Crew **PT. BINESQO Mulyatama Sejahtera's** committed :  
To improve customer satisfaction. Produce high quality and invironmentally safe product. Deliver services and ensure project implementation that exceed client's expectation. Professionalism and integrity in conducting the business. Increasing welfare of community, employees and shareholder.

As our commitment to continually improve our service and consistently creating a custom designed service according to demand and flexibility, since April 2004 we have developed and implemented the Quality Management System of ISO 9001 : 2008,

We would welcome the opportunity to discuss in detail how **PT. BINESQO Mulyatama Sejahtera** can serve you



## Company Outline

**Company :**

Company Name : PT. BINESQO Mulyatama Sejahtera

Established : 30 July 2012 ( Was PT. Cahaya Anugrah Tama )

Office and Workshop : Jl. Eropa.1, Kav.I-2/4  
Krakatau Industrial Estate  
Cilegon 42443, Banten-Indonesia

Phone : +62 254 393315 ( Hunting )

Fax : +62 254 385708

Email : infobms@binesqo.com

Web : www.binesqo.com

**Certification :**

Management : AZ/NZS ISO 9001: 2008 - QEC 21259

**Directors :**

Director : Sri Mulyono

**Contact :**

Enquiry : Sri Mulyono - Director  
Email : srimulyono@binesqo.com

Technical : Sutarto - General Manager  
Email : sutarto@binesqo.com

: Moh. Natsir - Engineering Manager  
Email : natsir@binesqo.com

: Joko Trimanto - Project Manager  
Email : joko@binesqo.com

Production : Janatar S - Production Manager  
Email : janatar@binesqo.com

QA/QC : Amrizal - QA/QC Manager  
Email : amrizal@binesqo.com



## Quality Policy



As our commitment to continually improve our service and consistently creating a custom designed service according to demand and flexibility, since April 2004 we have developed and implemented the Quality Management System of ISO 9001 : 2008,

including to fulfill application regulatory/statutory requirement. We take our accreditation as evidence that our company continue a firm commitment to the highest possible standards of customer quality and service



## Scope Of Services

PT. BINESQO Mulyatama Sejahtera's is a full services company. Taking overall responsibility for the Engineering, Procurement, Fabrication and Site construction of :

- Pressure Vessel : Drum, Column, Filter, Heater, Separator, Heat Exchanger and Others.
- Tankage : Welded Steel Tank.
- Process Equipm : Silo, Bin, Chut, Condensor, Stack, Silincer
- Piping : Piping System, Manifold and Metering.
- Pipe Line : Above and Under ground Pipe line for Natural Gas, Oil, Chemical, Water, Liquid Nitrogen and Liquid Oxygen
- Steel Structural : Heavy, Medium, Light Structural tubular and Structural shape fabrication.
- Site Work : Erection work, Modification, Replacement, Shutdown and Maintenance
- Civil Work : Building, Warehouse, Foundation and Road
- Other Services : Sandblasting, Painting, Rolling plate and Scaffolding services, Hot and Cool Insulation



## Workshop Facility



**PT. BINESQO Mulyatama Sejahtera** is operating at its own yard facilities, a 16.000 Sqm premises in Krakatau Heavy Industry Estate in Cilegon city, Banten province.

The location is easily accessible through the Jakarta - Merak highway.



### Workshop - 1

Size 30 M.Wx100 M.L x12 M.H  
In this workshop installed 2-Unit Overhead Crane 30 Tons Capt.  
2-Units Plate Rolling machine,  
40-Units Welding machine  
and Air compressed line, Oxygen and LPG Line



### Workshop - 2

Size 15 M.W x 100 M.L x 12 M.M  
In this Workshop installed 1-Unit Overhead Crane 10-Tons Cap.  
3-Units Punching machine, Drilling machine, 30-Units, Welding machine  
and Air compressed line, Oxygen and LPG Line





## **Workshop Facility**



### **Blasting Shop**

Size 8 M.w x 14 M.l x 8 M.h  
In this Blasting shop installed 2-Unit, Screw Air Compressor 1200 Cfm, 1-Unit Blasting Pot Painting equipment, and Dust Collector

### **Open Storage - 1**

3000 Sqm, Raw material storage yard



### **Open Storage - 2**

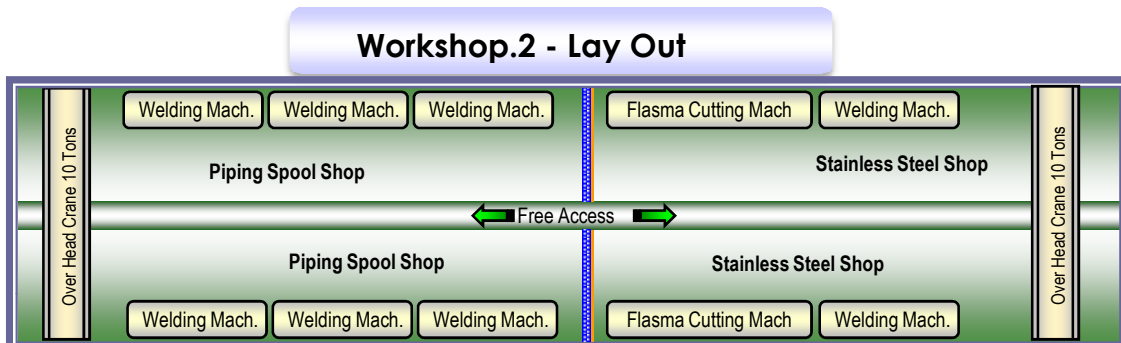
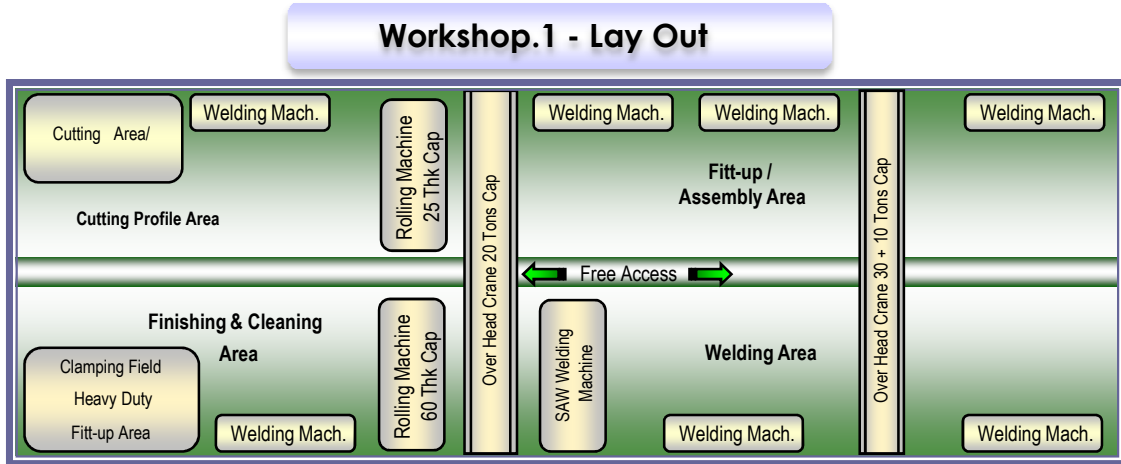
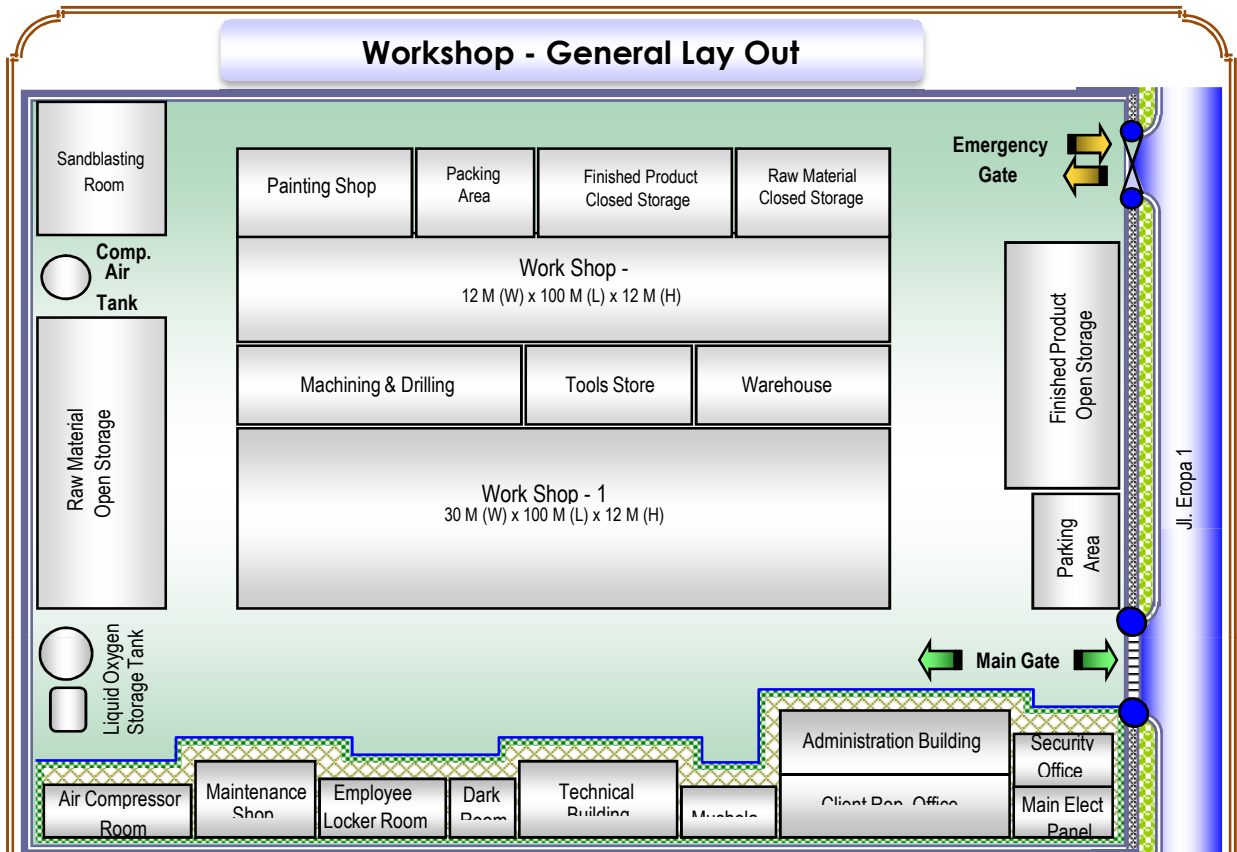
5000 Sqm, Finished Product Storage yard

### **General Amenity**

A total of 2.500 Sqm  
Technical and Administration  
Building









## Equipment Facility



### Over Head Crane

SWL : 30 Tons  
Quantity : 2 Unit  
Lifting High : 12 Mtr



### Over Head Crane

SWL : 20 Tons  
Quantity : 2 Unit  
Lifting High : 12 Mtr



### Plate Rolling Machine

Capacity : 60.00 Mm  
Min Insize Dia : 400 Mm  
Max Wide : 3000 Mm



### SAW Welding Machine

Quantity : 6 Unit  
Capacity : 1200 Amp



### MIG/MAG Welding Machine

Quantity : 26 Unit  
Capacity : 600 Amp



### Diesel Welding Machine

Quantity : 28 Unit  
Capacity : 600 Amp



### Plasma Cutting Machine

Quantity : 6 Unit  
Capacity : 50 Mm

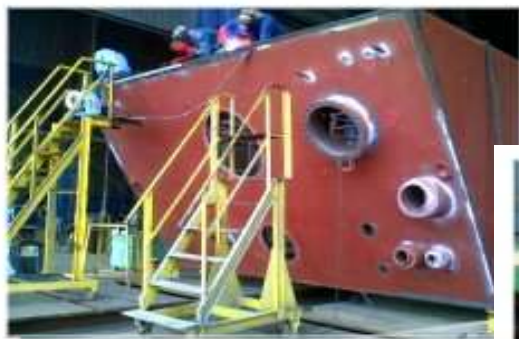


## Work Experience Photographs



### HP Steam Condenser

Size : 6 Unit  
Total Tube : 18200 Pcs x 19 mm  
Weight : 280 Ton



### Condenser Parts



### Expansion Joint





## Work Experience Photographs



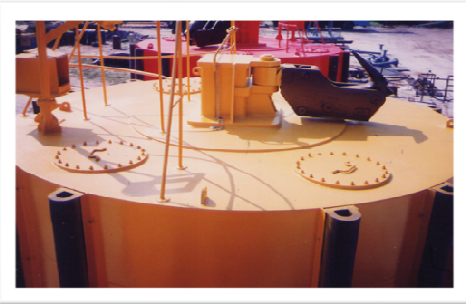
**Pressure Vessel**



**Pig Launcher & Receiver**



**Screw Conveyor & Screw Feeder**



**SBM Mooring Buoy**



**Ventury Cooler**



**Tube Bundle - Oil Preheater**



**Piping Spool**



## Work Experience Photographs



**Storage Tank**



**Casing Pot & Premelt Pot**



**Scrabber Stack**



## Work Experience Photographs



**MBF Cooltron**



**Dryer Casing**



**Reactor**





## Work Experience List - 3 Years Last

| No | Client                        | Project/Location                                  | Scope of work   | Qty         | Year |
|----|-------------------------------|---|---|-------------|------|
| 1  | PT. Shinko Plantech Indonesia | Misscellaneous Steel Structural fabrication       | Procurement, Fabrication, testing and painting                      | 1210 - Tons | 2010 |
| 2  | PT.Cabot Indonesia            | Ventury Cooler and Scrubber                       | Procurement, Fabrication, Construction, test and Commissioning      | 3 - Unit    | 2010 |
| 3  | Star Energy Geothermal        | Pipe Line Installation 12' Dia                    | Procurement, Fabrication, Testing and Commissioning                 | 12 - Km     | 2010 |
| 4  | PT.Sentra Usahatama Jaya      | Boiler Stack<br>2400 Dia x 58 M H                 | Procurement, Fabrication, test, painting including civil foundation | 1 - Units   | 2010 |
| 5  | CNOOC Ses Ltd                 | Offshore Platform Extention<br>CINTA - B Platform | Procurement, Fabrication and Site Installation                      | 430 - Tons  | 2010 |
| 6  | PT. Rohm and Haas Indonesia   | Storage Tank<br>12 M Dia x 8 M H                  | Procurement, Fabrication, test, painting including civil foundation | 1 - Unit    | 2010 |
| 7  | PT. Blue Scope Steel          | Fabrication of Ducting                            | Engineering, Procurement, Fabrication, testing and painting         | 78 - Tons   | 2010 |
| 8  | BP.Indonesia                  | Piping Spool Fabrication                          | Procurement, Fabrication, Test and Painting                         | 186 - Tons  | 2010 |
| 9  | Conoco Phillip                | Piping Spool Fabrication                          | Procurement, Fabrication and Installation                           | 242 - Tons  | 2010 |
| 10 | PT. Siemens Indonesia         | Steam Neck Condensor                              | Procurement, Fabrication, Test and Painting                         | 2 - Unit    | 2010 |



## Work Experience List - 3 Years Last

| No | Client                         | Project/Location   | Scope of work   | Qty        | Year |
|----|--------------------------------|--|---|------------|------|
| 11 | PT. Cabot Indonesia            | Reactor and Dryer Casing Merak The Bottle nacking Project                    | Proc, Fabrication, testing. Painting nd Castable Work   | 2 - Units  | 2011 |
| 12 | PT. Nusaraya Putra Mandiri     | Iso Tank 3000 Dia x 6000 Lg Sus-304  | Procurement, Fabrication, test and Commissioning        | 3 - Units  | 2011 |
| 13 | PT. Cabot Indonesia            | Storage and Drum Elevator  | Procurement, Fabrication, Testing and Commissioning     | 2 - Units  | 2011 |
| 14 | PT. Cabot Indonesia            | Dryer Stack and Process Purge Stack  | Procurement, Fabrication, test, and painting            | 2 - Units  | 2011 |
| 15 | PT.Styron Indonesia            | Hot Steam Line Piping  | Procurement, Fabrication and Site Installation          | 1-Lot      | 2011 |
| 16 | PT. Sentra Usahatama Jaya      | Sealing Tank 6600 Dia x 7200 H Sus-304                                       | Procurement, Fabrication, Site Erection& test           | 1 - Unit   | 2011 |
| 17 | PT. Sentra Usahatama Jaya      | Barometric Condensor   | Installation, testing and Commissioning                 | 1 - Unit   | 2011 |
| 18 | PT. Siemens Indonesia          | Water Box, LPOC, Steam Neck, Steam Pipe, Dome Wall & Other Steel fabrication | Fabrication, Test and Painting                          | 640 - Tons | 2011 |
| 19 | PT. Siemens Indonesia          | Expansion Joint 6000 Dia x 1500 Lg   | Procurement, Fabrication and Test                       | 6 - Units  | 2011 |
| 20 | PT. Blue Scope Steel Indonesia | Hot Steam Ducting  | Procurement, Fabrication, Test, Painting & Installation | 56 - Tons  | 2011 |





## Work Experience List - 3 Years Last

| No | Client                       | Project/Location   | Scope of work           | Qty        | Year |
|----|------------------------------|--|-------------------------|------------|------|
| 21 | PT.Shinko Plantech Indonesia | Ducting, Expansion Bellows, Damper Valve and Silencer Fabrication - Cikarang | Supply and Fabrication  | 82 - Tons  | 2012 |
| 22 | PT. Sentra Usaha Tama Jaya   | Cooling Tower  | Supply and Construction | 1 - Lot    | 2012 |
| 23 | PT. Siemens Indonesia        | Fabrication of Platform Combution Chamber and Expansion Joint                | Supply and Fabrication  | 77 - Tons  | 2012 |
| 24 | PT. Rohm and Hass Indonesia  | Storage Tank<br>6800 Dia x 8200 H<br>Astm 283 C                              | Supply and Construction | 1 - Unit   | 2012 |
| 25 | PT.Shinko Plantech Indonesia | H3SO4 Storage Tank<br>9200 Dia x 7800 H<br>Astm 283 C                        | Supply and Construction | 1 - Unit   | 2012 |
| 26 | PT. Sentra Usaha Tama Jaya   | CO2 Gas Tank   | Supply and Construction | 1 - Unit   | 2012 |
| 27 | PT.Cabot Indonesia           | Ventury Cooler<br>1200 Dia x 8400 Lg<br>Sus 316L                             | Supply and Fabricaion   | 1 - Unit   | 2012 |
| 28 | CNOOC SES Ltd                | Steel Structural Offshore Platform Refurbishment                             | Supply and Fabricaion   | 233 - Tons | 2012 |
| 29 | CNOOC SES Ltd                | Piping Spool Fabrication   | Supply and Fabricaion   | 327 - Tons | 2012 |
| 30 | PT. Simens Indonesia         | Fabrication of Condensor and LPOC Parts                                      | Supply and Fabrication  | 124 - Tons | 2012 |